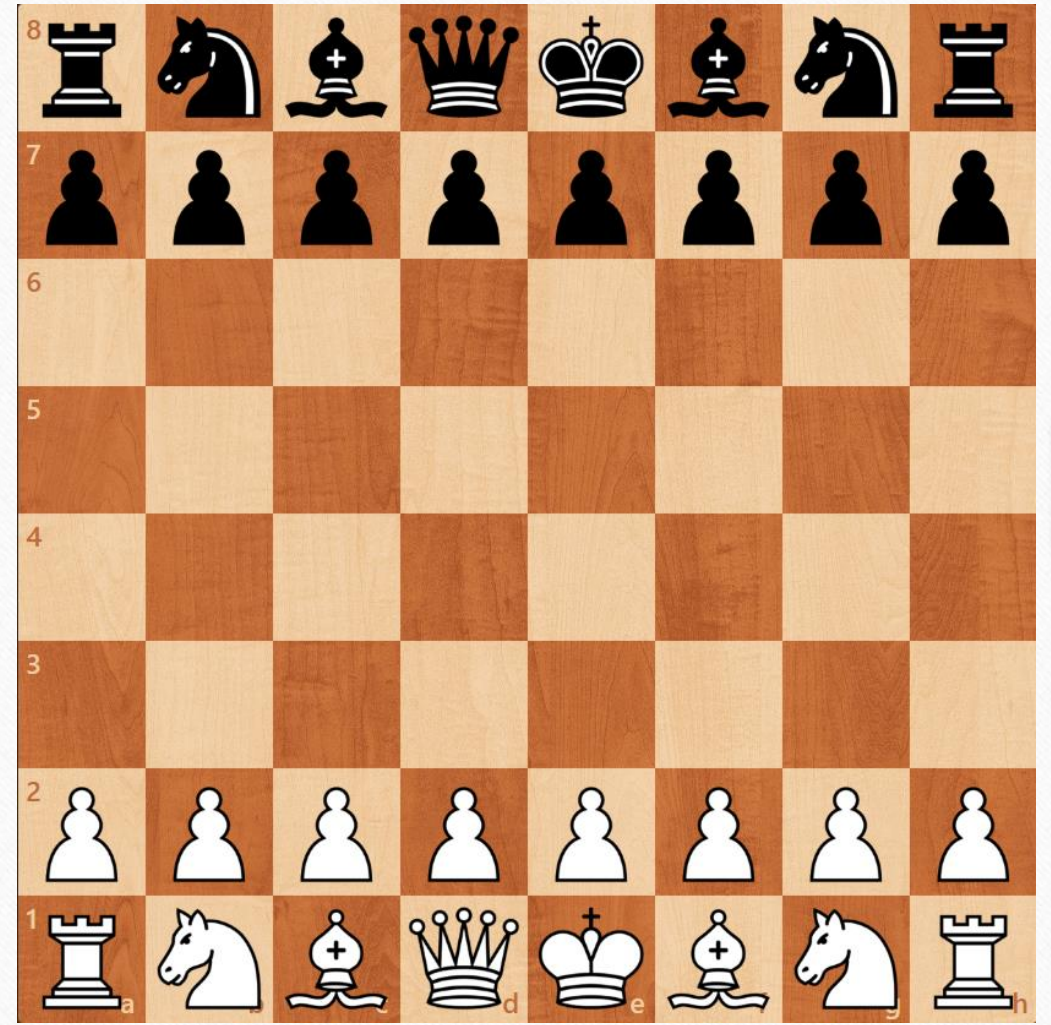




Chess

History of Chess

Chess began in ancient India around the 6th century AD, called "chaturanga." It spread to Persia, then Europe by the 9th century. The game evolved over time, with modern rules established by the 15th century. Competitive chess began in the 19th century, with the first tournament in London in 1851. Today, chess is played worldwide, enjoyed by millions for its strategic challenges.



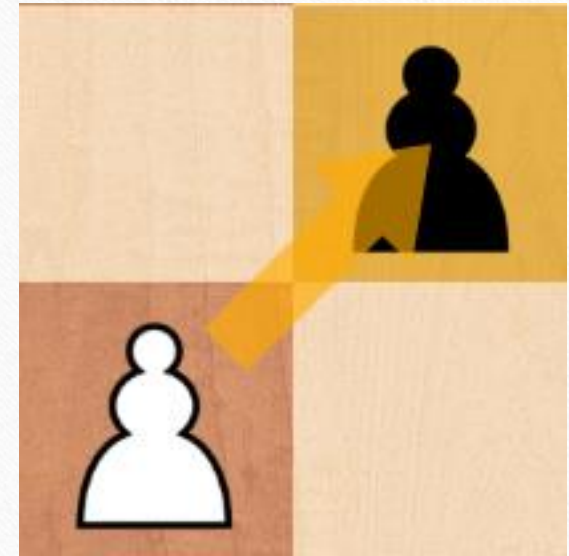
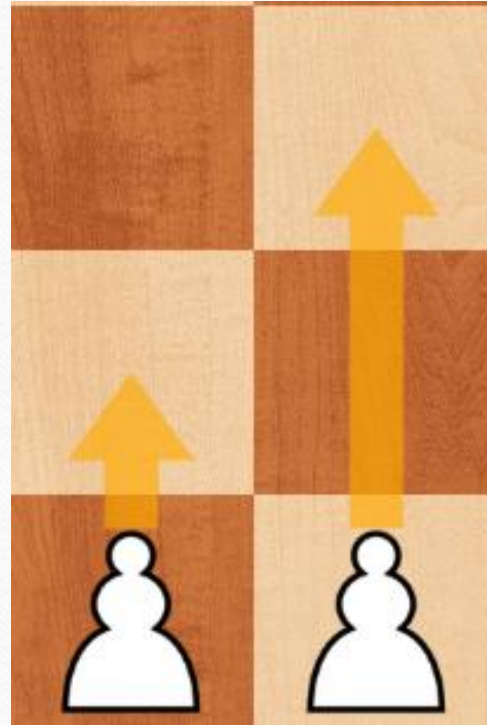
The Main Purpose of Chess

Players strategically move their pieces across the board to control territory, develop their position, and ultimately threaten the opponent's king, aiming for a checkmate, where the king is in a position to be captured with no legal moves to escape.



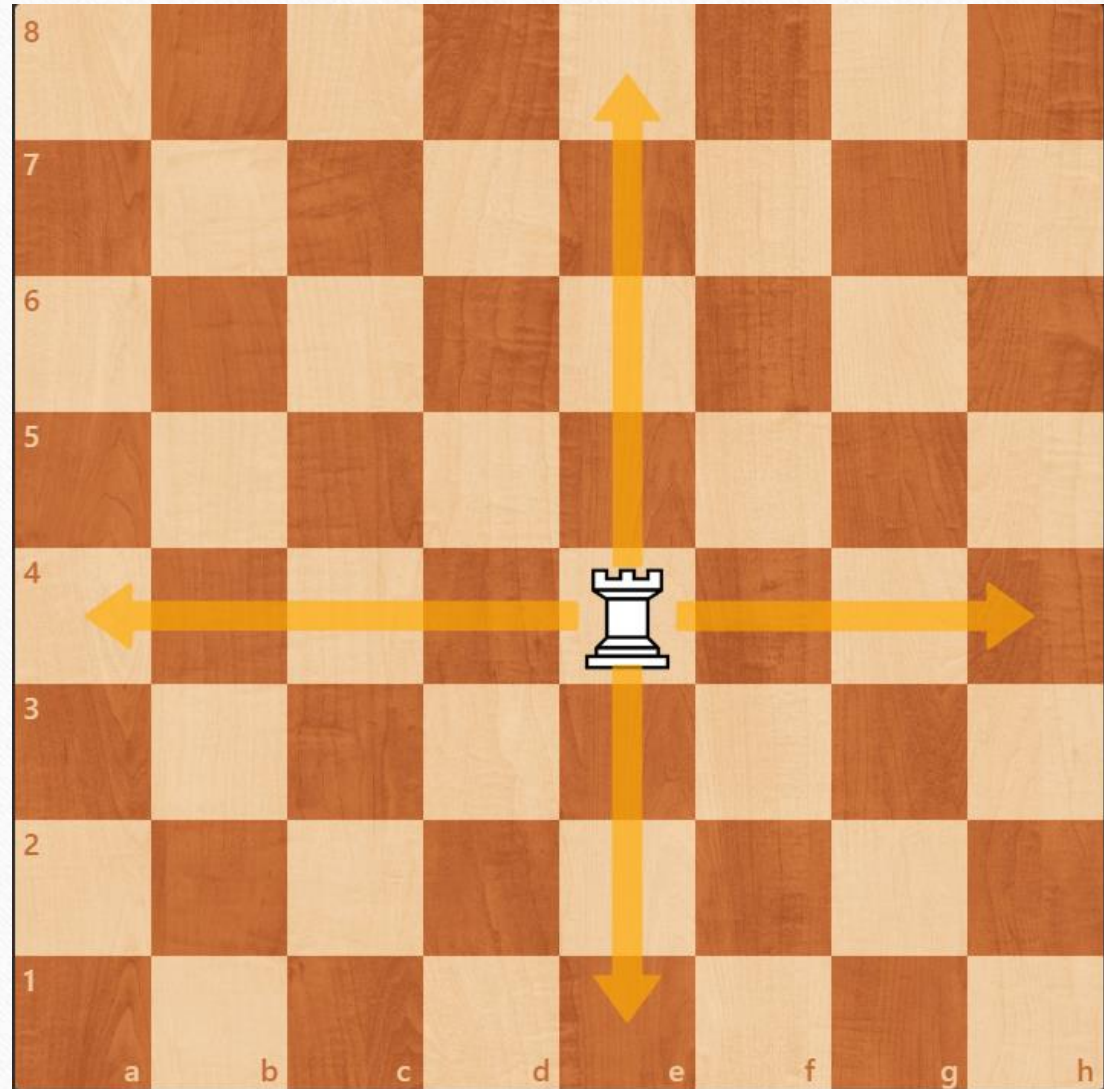
Pawn

In chess, each piece moves differently. The pawn moves forward one square at a time, but on its first move, it can move two squares. Pawns capture diagonally.



The Rook

The rook moves in straight lines horizontally or vertically, as far as possible.



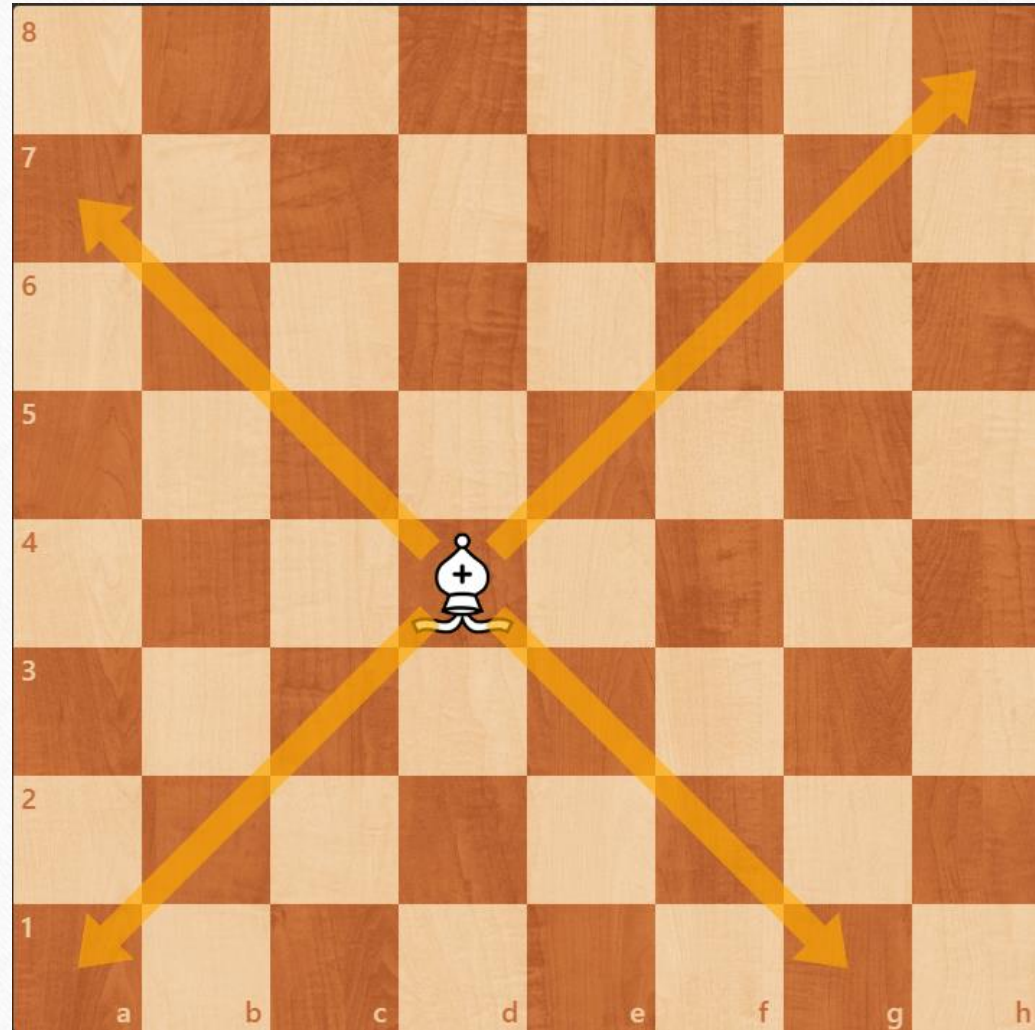
Knight

The knight moves in an L-shape, two squares in one direction and then one square at a right angle.



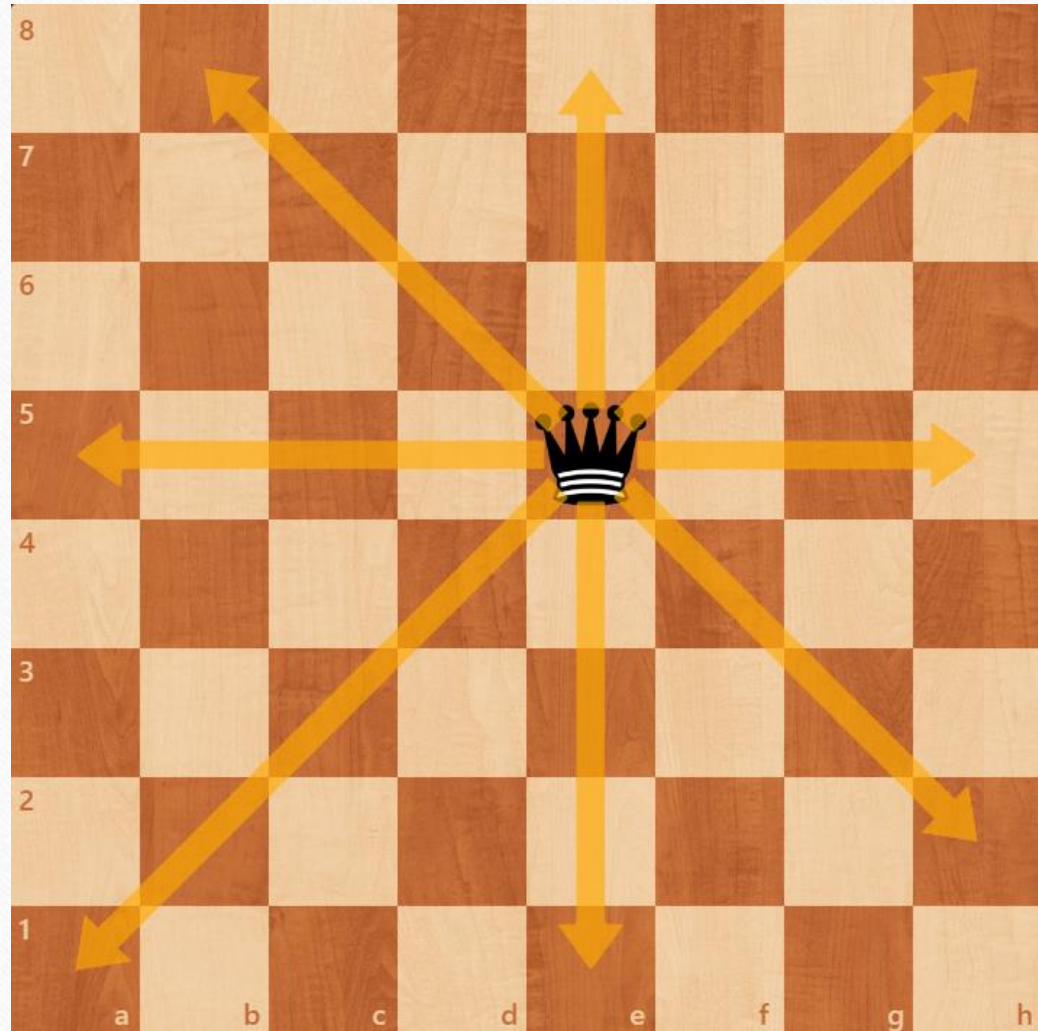
Bishop

The bishop moves diagonally, as far as possible.



The Queen

The queen combines the movements of the rook and the bishop, moving horizontally, vertically, or diagonally.



The King

The king who is the most important piece moves one square in any direction.



Thank you for listening me!